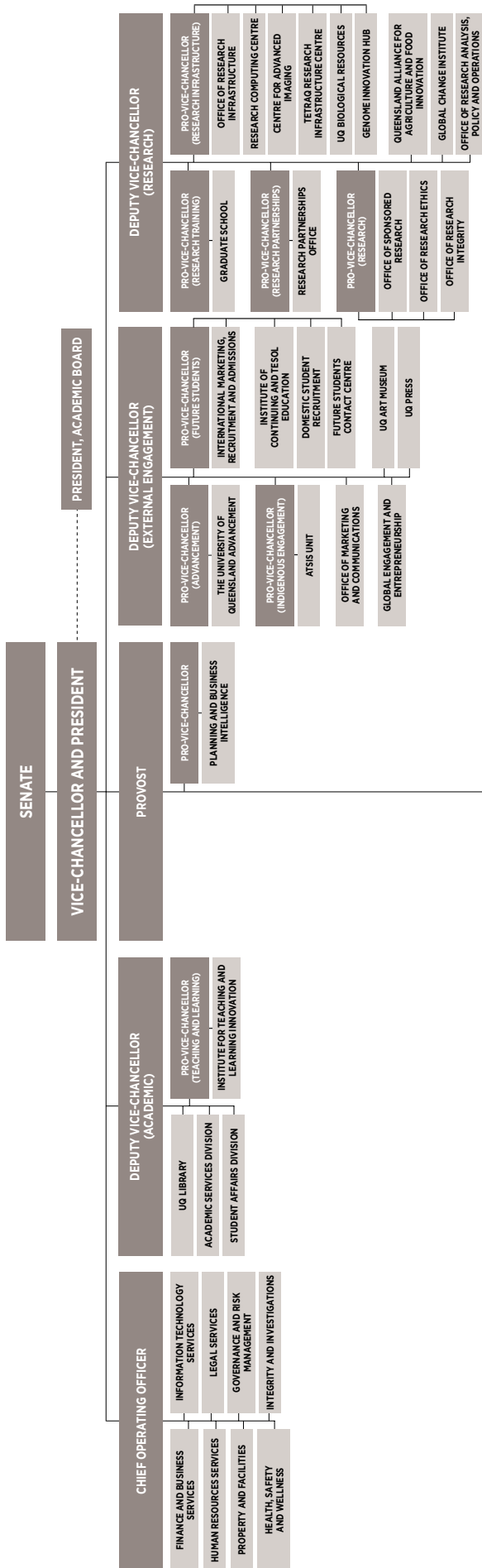


# ORGANISATIONAL STRUCTURE / LINES OF RESPONSIBILITY

As at November 2018

Issued by the Office of the Chief Operating Officer  
[uq.edu.au/about/docs/org-chart](http://uq.edu.au/about/docs/org-chart)

As at November 2018



<b>Director, Institute for Molecular Bioscience</b>	<b>DIVISIONS</b> Chemical and Structural Biology Cell Biology and Molecular Medicine Genomics of Development and Disease
<b>Director, Queensland Brain Institute</b>	<b>CENTRES</b> Science of Learning Centre Clem Jones Centre for Ageing Dementia Research Centre for Restorative Neuroscience Asia-Pacific Centre for Neuromodulation
<b>Director, Australian Institute for Bioengineering and Nanotechnology</b>	<b>CENTRES</b> Personalised Nanomedicine Centre Centre for Theoretical and Computational Molecular Science Stem Cell Ageing and Regenerative Medicine
<b>Director, Sustainable Minerals Institute</b>	<b>CENTRES</b> Centre for Mine Land Rehabilitation Centre for Social Responsibility in Mining Centre for Water in the Minerals Industry Julius Kruttschmitt Mineral Research Centre Minerals Industry Safety and Health Centre VH Bryan Mining and Geology Research Centre
<b>Executive Dean, Faculty of Engineering, Architecture and Information Technology</b>	<b>SCHOOLS</b> Architecture Chemical Engineering Civil Engineering Mechanical and Mining Engineering Information Technology and Electrical Engineering <b>FACULTY CENTRES</b> Advanced Water Management Centre Centre for Coal Seam Gas
<b>Executive Dean, Faculty of Health and Behavioural Sciences</b>	<b>SCHOOLS</b> Dentistry Health and Rehabilitation Sciences Human Movement and Nutrition Sciences Nursing, Midwifery and Social Work Pharmacy <b>UNIVERSITY CENTRES</b> Centre for the Business and Economics of Health and Environmental Health Sciences UQ Poche Centre for Indigenous Health <b>FACULTY CENTRES</b> Centre for Youth Substance Abuse Research RECOVER Injury Research Centre
<b>Executive Dean, Faculty of Medicine</b>	<b>SCHOOLS</b> Biomedical Sciences Public Health <b>CLINICAL SCHOOLS</b> Clinical Medicine Ochsner Rural <b>FACULTY CENTRES</b> Child Health Research Centre Health Services Research The University of Queensland Diamantina Institute UQ Centre for Clinical Research (UOCCR) <b>INSTITUTES</b> Water Research Institute- UQ (WRI-UQ)
<b>Executive Dean, Faculty of Social Sciences</b>	<b>SCHOOLS</b> Communication and Arts Education Historical and Philosophical Inquiry Languages and Cultures Music Political Science and International Studies Social Science <b>INSTITUTE</b> Institute for Social Science Research <b>UNIVERSITY CENTRE</b> Confucius Institute <b>FACULTY CENTRES</b> Institute for Advanced Studies in the Humanities Centre for Policy Futures <b>OTHER</b> Institute of Modern Languages
<b>Executive Dean, Faculty of Science</b>	<b>SCHOOLS</b> Agriculture and Food Sciences Biological Sciences Earth and Environmental Sciences Chemistry and Molecular Biosciences Mathematics and Physics Veterinary Science <b>UNIVERSITY CENTRES</b> Centre for Microscopy and Microanalysis Australian Infectious Disease Research Centre <b>FACULTY CENTRES</b> Australian Equine Genetics Research Centre Terrestrial Ecosystem Research Network Centre for Biodiversity and Conservation Science <b>OTHER</b> Gatton campus